

24 | 25

Annual Report



Transforming
Care. Together.

Table of Contents

01.	Message from Leadership	4
02.	Year in Review: By the Numbers	6
03.	Stories of Impact	9
04.	Community and Events	14
05.	Home Lottery	19
06.	Transformational Giving	22
07.	Planned Giving	27
08.	Financials	29
09.	Looking Ahead	32

01. Message from Leadership

Message from Leadership

*The past year has
been a defining one
for the Health Care
Foundation.*



Together with our philanthropic community, we have advanced initiatives that are not only meeting today's needs, but reshaping what healthcare can look like for the future of Newfoundland and Labrador.

This was a year marked by exceptional milestones. The launch of an \$8 million initiative set the stage for transformational change in surgical care. The Comfort in Care™ program celebrated two decades of enhancing the patient and family experience, supporting frontline teams with \$100,000 in grants that bring compassion, connection, and comfort to care. Donor generosity reached record levels through Row4Heart and The Big Raise, fuelling innovation in cardiac and surgical care. Their support helped create welcoming spaces for seniors, opportunities for individuals in recovery, and resources for research and innovation that will strengthen our healthcare system for generations to come. The Foundation also established a \$300,000 Health Innovation Fund to support the Health Innovation Acceleration Centre and advance innovative healthcare solutions across Newfoundland and Labrador, as well as nationally and internationally.

What stands behind each of these achievements is not simply funding, but a commitment to something larger: the belief that healthcare touches us all,

and that philanthropy has the power to transform it. Whether through a landmark campaign gift, participation in an event, or a tribute made in honour of a loved one, every act of generosity contributes to a shared success that advances care for patients, residents, families, and the dedicated professionals who serve them.

As we look ahead, our vision remains clear. Guided by the priorities of Newfoundland and Labrador Health Services, we are committed to stewarding every contribution with care, accountability, and impact. With the continued partnership of this remarkable community, we will build on the momentum of the past year to address emerging needs, embrace new opportunities, and ensure healthcare in Newfoundland and Labrador continues to evolve with compassion and innovation at its core.

On behalf of our Board of Directors and the entire team, thank you for your trust and your generosity. Together, we are not only responding to the needs of today; we are shaping the future of healthcare for all.

Ken Bennett
Chair, Board of Directors

Paul Snow
President and CEO

02. Year in Review: By the Numbers

Year in Review: By the Numbers

The past year was defined by generosity, collaboration, and transformational impact. Every number represents not only a milestone achieved, but the people and communities whose lives were touched by philanthropy.

\$8 million



committed through our robotic-assisted surgery initiative, driving transformational change that will strengthen healthcare for years to come.

\$8 million



cardiac catheterization labs revitalization completed, including the addition of a fourth lab.

\$300,000

invested for a Provincial Health Innovation Fund to advance new solutions in care through Newfoundland and Labrador's health-care innovation ecosystem.

\$100,000



awarded through the Comfort in Care™ program, marking 20 years of supporting frontline teams in enhancing the patient and family experience.

50 individuals

empowered through the Moving Lives Forward Scholarship Program, supported by NAPE, with \$45,000 in funding to advance recovery, education, and wellness.

\$173,025

raised through Row4Heart, uniting 41 teams in record-breaking support of cardiac care.

Year in Review: By the Numbers

\$102,918

raised at the Gurney Cup Golf Tournament, strengthening adult healthcare.



\$351,560

raised through The Big Raise, advancing surgical innovation in Newfoundland and Labrador.

Hundreds

of volunteers and community supporters engaged through events like the Classic Car Show, Breakfast with Santa, and the Tim Hortons Smile Cookie campaign.

\$129,855

raised at Brunch with the Bags, supporting Women's Health programs.



\$50,000

invested in research grants, supporting new knowledge and innovation in care.

3,645
Donors



united in generosity to strengthen healthcare across Newfoundland and Labrador.

Together, these achievements reflect the power of philanthropy to turn generosity into meaningful change, ensuring patients,

residents, families, and healthcare providers are supported with compassion and innovation at every step.

03. Stories of Impact



Comfort in Care™

Twenty years of enhancing the care experience for patients, residents, and families

For twenty years, the Comfort in Care™ program has helped shape a more compassionate healthcare experience for patients, residents, families, and care teams in Newfoundland and Labrador. What began as a simple idea has grown into one of the Foundation's longest-standing and most impactful philanthropic initiatives, made possible through the generosity of donors who believe in the value of comfort, dignity, and connection in care.



Each year, frontline teams across hospitals, health centres, and long-term care homes identify the items they know will make the greatest difference in the daily experience of the people they serve.

This year, \$100,000 in Comfort in Care™ grants supported 100 teams across the region, helping bring meaningful improvements to care environments of every kind.



Over two decades, the depth and breadth of items funded through the program has been remarkable. Grants have supported sleeper chairs that allow families to remain close to loved ones, Sara Stedy devices that promote safe mobility, blanket warmers that provide soothing warmth to patients during difficult moments, ice machines that offer comfort during treatment and recovery, and translation tools that support clearer communication for patients and families. They have funded Guided Hands, a rehabilitation device that gives patients greater independence to engage in activities such as writing, artwork, and signing documents. Other items include wheelchairs and walkers that

restore movement, therapeutic games that support cognitive and social engagement, televisions that reduce isolation, and many more items that ease the challenges associated with both hospital stays and long-term care experiences.

What makes Comfort in Care™ unique is that every funded item is selected directly by care providers who understand the specific needs of their patients.

This frontline-driven approach ensures the program remains responsive, relevant, and deeply human.

As the program marks its twentieth year, its impact is seen not only in the items purchased, but in the moments of connection they create. Comfort in Care™ demonstrates how philanthropy can transform the experience of care in ways that extend far beyond treatment, offering warmth, dignity, and support during some of life's most difficult moments. Its longevity reflects the enduring belief among donors that compassion has a vital role in healthcare, and that even the smallest comforts can make a lasting difference.

Moving Lives Forward:

Supporting Recovery and Growth



The Moving Lives Forward Scholarship Program affirms that recovery is about more than treatment; it is about opportunity, growth, and hope. Funded through the generosity of the Newfoundland and Labrador Association of Public and Private Employees (NAPE), the program provided \$45,000 in scholarships to 50 individuals participating in

our provincial Mental Health and Addictions programs this year. Each scholarship supported education, creative pursuits, or wellness activities such as yoga, art, or music. For recipients, these opportunities represent meaningful steps toward independence, confidence, and healing. Moving Lives Forward reflects how donor support

changes lives in deeply personal ways, empowering individuals to reclaim their futures and embrace new possibilities on their path to wellness.



Peaceful Ports:

Spaces of Calm and Care

Healing takes place not only through treatment, but also through the environments that surround us. The Health Care Foundation's Peaceful Ports project is dedicated to transforming hospital spaces into comfortable, welcoming settings

that promote wellness and healing. This year, donor generosity supported the completion of senior-friendly rooms at St. Clare's Mercy Hospital and in the Coronary Care Unit at the Health Sciences Centre.

Grounded in the belief that we cannot change the story, but we can change the setting, Peaceful Ports helps ensure that patients and families experience care in surroundings that reflect compassion, comfort, and connection in a homelike environment. It is a powerful example of how philanthropy can reimagine healthcare spaces to bring dignity and humanity into moments that matter most.

A Patient's Story: Tom LeGrow

A second chance made possible through exceptional cardiac care

For more than a decade, Tom LeGrow lived with a quiet vigilance. Diagnosed with dilated cardiomyopathy in 2002, he managed his condition with the support of the cardiology team at the Health Sciences Centre. The treatment allowed him to return to work within months, and for thirteen years he lived a full and active life without missing a single day due to his illness.

That stability changed suddenly in the fall of 2015. Tom's health declined with alarming speed, and by the time he arrived for an advanced appointment with his cardiologist in late November, he could barely walk. He was admitted to the intensive care unit and diagnosed with end-stage heart failure. After careful assessment, his care team determined that his only option was to be transferred to the University of Ottawa Heart Institute for advanced cardiac intervention and transplant assessment.

Within days, Tom was flown to Ottawa by air ambulance. There, he underwent surgery to receive a specialized pump that would support his heart while he awaited transplant eligibility. He and his wife, Heather, prepared for a long stay. The average wait for a heart transplant for someone with Tom's blood type was close to a year, and they were advised it could take eighteen months. They settled into an apartment on hospital grounds and tried to make daily life feel as normal as possible. Seven months later, the call came. Late one evening, Tom was told that a matching donor heart had become available. He was in surgery within hours, and by the time Heather arrived on an early morning flight, he was being wheeled out of the operating room. His recovery was remarkable. Twelve days after his transplant, he

was discharged. His words are simple but profound: "I was really fortunate."

Today, Tom continues to receive ongoing cardiac care in Newfoundland and Labrador, supported by the team at the Health Sciences Centre. The strength of cardiac services in this province, which donors help advance through initiatives such as the revitalization of the cardiac catheterization labs and the work of the Cardiovascular and Stroke Institute, ensures that patients like Tom can receive exceptional follow-up care close to home.

Tom often thinks about the donor and family who made his second chance possible. The gratitude he carries has shaped his path forward. He now considers it his responsibility to give back. As an active volunteer with Row4Heart, he shares his story openly to support others on similar journeys and to help raise awareness about the power of both organ donation and philanthropy.

"Much of what is available to patients like me is made possible through donor support and the ongoing work of the Health Care Foundation," Tom says. His experience is a reminder that philanthropy reaches far beyond equipment and facilities. It restores hope, renews lives, and gives families the gift of time.



04. Community and Events

Row4Heart:

A Record-Breaking Year

The 2025 Row4Heart was a powerful demonstration of community in action.

With 41 registered teams and \$173,025 raised, it marked a record-breaking year in support of cardiac care in Newfoundland and Labrador.

Participants of all fitness levels came together to honour loved ones, raise awareness, and strengthen care. Among them were transplant recipients, whose participation served as a powerful full-circle reminder of what advanced cardiac services can make possible. Through Row4Heart, philanthropy is not only funding innovation in cardiac services, but also building momentum for healthier futures. The event continues to show how community spirit and generosity can turn collective effort into lasting impact for patients and families across the province.



COMMUNITY HIGHLIGHT

A Time for Health

Encouraging Conversations,
Inspiring Wellness

Through A Time for Health, the Health Care Foundation partnered with the Provincial Cardiovascular and Stroke Program of NL Health Services and the Community Sector Council to foster dialogue on wellness, prevention, and the social determinants of health.

Hosted in communities across Newfoundland and Labrador, these events brought people together through food, music, cultural exhibitions, and conversation – connecting municipal leaders, healthcare experts, and community members in meaningful discussions about well-being.

The initiative reflects how philanthropy and collaboration can empower healthier communities by focusing not only on care, but on prevention and connection.

COMMUNITY HIGHLIGHT

Classic Car Show



Now in its third year, the Classic Car Show raised more than \$4,000 in support of patient enrichment at the Dr. L. A. Miller Centre. These funds strengthened recreation programs such as seasonal celebrations and community outings, helping create moments of joy, connection, and engagement for patients. The event reflects how even small acts of generosity can make a meaningful difference in the daily experience of those receiving care.

! Over \$9,400 raised since inception



The Big Raise:

Advancing Surgical Innovation

This year's Big Raise once again brought donors and community leaders together in an evening of generosity and purpose. Founded by Craig Tucker and Craig Rowe, the event has grown into one of the Foundation's most impactful fundraising initiatives, demonstrating the extraordinary results that can be achieved when vision and philanthropy align. Hosted at the JAG Soundhouse,

the event raised \$351,560 to advance surgical innovation in Newfoundland and Labrador.

The funds raised are supporting advancements in surgical care that will directly shape outcomes for patients, helping ensure that access to leading-edge technology and expertise is available in this province.



Brunch with the Bags:

Supporting Women's Health


Brunch with the Bags 2024 brought together donors, sponsors, and supporters for a morning filled with energy, generosity, and impact. With inspiring voices from the Women's Health Program and the support of dedicated sponsors,

the event raised \$129,855 to strengthen women's health in Newfoundland and Labrador.

Beyond fundraising, Brunch with the Bags is a gathering that builds awareness, fosters connection, and highlights the importance of investing in women's care close to home. Year after year, it reflects the generosity of a community committed to advancing programs that directly support women and families.

COMMUNITY HIGHLIGHT

Tim Hortons Smile Cookie



The annual Tim Hortons Smile Cookie campaign raised nearly \$4,000 this year in support of patient enrichment at the Health Sciences Centre. Since 2019, the initiative has contributed more than \$12,000 to the Foundation, with Compass Group's commitment helping direct these funds toward enhanced care spaces, essential medical equipment, and community health programs that strengthen access to mental health supports. Each cookie sold reflects a small act of generosity that adds up to meaningful enhancements in care.

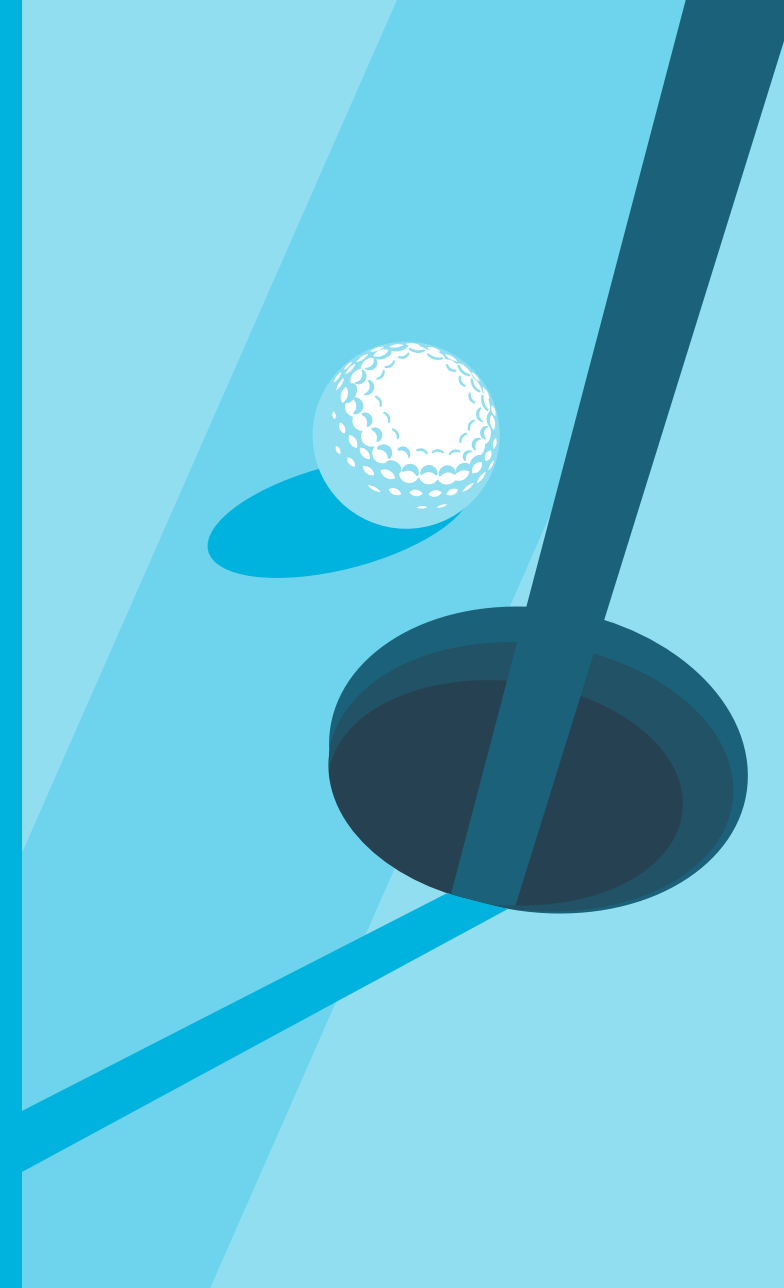
Gurney Cup Golf Tournament:

Driving Care Forward

The annual Gurney Cup golf tournament once again rallied donors, sponsors, and volunteers in support of adult healthcare. Hosted at The Wilds Resort, the tournament

brought together more than 120 golfers and raised \$102,918 for the Health Care Foundation.

Known for its sense of camaraderie and tradition, the Gurney Cup has become more than a tournament; it is a valued community event that unites philanthropy and partnership on the fairway. Through the generosity of players, sponsors, and volunteers, the Gurney Cup continues to strengthen healthcare programs and services that touch countless lives each year.



05. Home Lottery

COMMUNITY HIGHLIGHT
Breakfast With Santa



Thanks to Compass Group and supporting sponsors, Breakfast with Santa raised more than \$14,000 to support the Health Care Foundation's Comfort in Care™ program. These funds help bring meaningful additions to hospitals and health centres, including comfort items and additional supports for patients, residents, and families. Volunteers created a festive atmosphere as they served breakfast to staff working across the region, making this event a valued tradition that directly strengthens the experience of care.

Advancing Care Through Community Generosity

Each year, the Health Care Foundation Home Lottery demonstrates the extraordinary impact that can be achieved when thousands of individuals come together with a shared purpose: strengthening healthcare here at home.

*In 2024, 42,000 tickets
were purchased by 24,559
supporters, helping generate
\$1.34 million in net proceeds*

that directly support priority needs across the health system.

Every ticket purchased contributes to meaningful improvements in care by helping fund essential equipment, technology, and enhancements that benefit patients, residents, and families. The Home Lottery has become a trusted and impactful way for our community to make a difference, offering supporters the chance to win while ensuring that healthcare teams have the resources they need to deliver exceptional, compassionate care.

17.5M
In Net Proceeds
to Healthcare

Since its inception, the program has awarded more than 22,000 prizes, provided over \$29 million in prize value, and returned more than \$17.5 million in net proceeds to healthcare. This long-standing success reflects the deep generosity of individuals across Newfoundland and Labrador and underscores how collective support continues to advance care in ways that will benefit generations to come.



06. Transformational Giving

Transformational Giving

Transformational change in healthcare requires bold vision, strong leadership, and extraordinary generosity.

These gifts are not simply contributions; they are investments in innovation, compassion, and hope for generations to come.

This year, major donors advanced initiatives that will shape the future of surgical care and strengthen cardiovascular and stroke programs in Newfoundland and Labrador. Each transformational gift reflects a shared belief in the power of philanthropy to create lasting impact and ensure healthcare continues to evolve to meet the needs of today and tomorrow.

Robotic-Assisted Surgery:

Shaping the Future of Surgical Care

This year marked the launch of an \$8 million initiative to bring robotic-assisted surgery to Newfoundland and Labrador, setting the foundation for a major advancement in surgical care. Developed in response to a clear need identified by clinical experts, the initiative reflects a commitment to ensuring that patients in this province have access to the same innovative technology available in leading surgical centres in Canada and around the world.

Robotic-assisted surgery is considered the gold standard for several complex procedures. The program has launched at the Health Sciences Centre within gynecological oncology, urology, and colorectal surgery, with additional specialties to integrate the technology as system capacity expands.

The system provides enhanced precision, improved visualization, and greater control for surgeons. It also supports a minimally invasive approach that can offer patients smaller incisions, reduced pain, and shorter recovery times, helping individuals return to daily life sooner. The system's



improved ergonomics also support surgeons during lengthy and technically demanding procedures.

Introducing this technology for the first time in Newfoundland and Labrador represents a significant step toward modernizing surgical care and ensuring that patients who once travelled out of province for specialized procedures can access advanced treatment options closer to home.

Donor support has been instrumental in advancing this vision and positioning the province to introduce robotic-assisted surgery for the first time. The strong early response to the initiative reflects a community united in purpose and committed to improving the experience and outcomes of care for patients, families, and surgical teams well into the future.

Cardiac Care:

Strengthening Lifesaving Treatment

Cardiac illness remains one of the most significant health challenges facing Newfoundlanders and Labradorians, touching families in every community and placing sustained pressure on the province's healthcare system. The need for responsive, high-performing cardiac services is especially critical here at home, where geography, population health trends, and the prevalence of heart disease converge to create conditions unlike anywhere else in the country.

Philanthropic investment has played an essential role in strengthening the province's capacity to diagnose, treat, and support cardiac patients. Donor generosity has been central to the revitalization and expansion of the cardiac catheterization labs at the Health Sciences Centre, a project that increases access to urgent and planned procedures and helps reduce wait times for individuals facing time-sensitive cardiac events.

These investments also support the ongoing work of cardiac care teams by ensuring they have the tools, technology, and environments needed to

provide excellence in care. From early diagnosis to emergency intervention to long-term disease management, donor support enhances the full continuum of cardiac treatment and helps ensure that patients receive high-quality care close to home.

Every contribution made toward cardiac care advances lifesaving treatment and reinforces a healthcare system prepared to respond when every second matters.

The impact is measured not only in procedures and technologies, but in the lives restored, moments regained, and futures rebuilt because advanced cardiac care is available in Newfoundland and Labrador.



Philanthropic Leaders

Recognizing donors whose extraordinary generosity advanced priority initiatives and strengthened health care in Newfoundland and Labrador throughout 2024–25.



Trades NL: Lifetime Partner



Brothers Family Foundation



Keith Bradbury & Brenda Snow



Thank You!

07. Planned Giving



Planned Giving

The Health Care Foundation's legacy programs reflect a shared belief that the desire to make a difference extends far beyond the present moment.

Through planned giving, donors are able to align their personal values with their philanthropic goals, creating impact that strengthens healthcare long into the future.

This year, the Foundation's From Success to Significance event brought together donors, advisors, and community leaders to honour those who choose to leave a lasting legacy. Through meaningful dialogue and shared experience, the event emphasized how thoughtful estate planning can help ensure that essential programs and services continue to grow and evolve for generations.

Legacy gifts have supported areas such as priority equipment, patient comfort initiatives, and emerging healthcare innovations. These contributions play a critical role in sustaining the Foundation's long-term ability to respond to needs

identified by Newfoundland and Labrador Health Services, ensuring that future patients and families benefit from compassionate, high-quality care.

The Foundation's Advisory Panel on Planned Giving continues to provide trusted guidance to individuals and families considering their philanthropic options. Through professional insight and personalized support, the program helps donors plan their legacy with confidence and clarity.

Across the province, more Newfoundlanders and Labradorians are recognizing the personal significance of legacy giving and the meaningful difference it can make. As this awareness grows, so too does a Legacy of Giving that will help meet the healthcare needs of tomorrow. Every planned gift, regardless of size, strengthens care for patients, residents, and families here at home.

08. Financials

Health Care Foundation of St. John's Inc.

Statement of Operations

Year ended March 31, 2025

Revenues	Total 2025	Total 2024	Expenditures	Total 2025	Total 2024
Annual Giving	592,267	628,950	Annual Giving	140,792	146,236
Major Giving	2,870,246	684,513	Major Giving	92,626	83,806
Planned Giving	169,983	358,158	Planned Giving	39,255	118
Special Events	742,509	686,479	Special Events	172,590	175,575
Hospital Home Lottery (Net)	1,291,072	1,221,184	Salaries and Benefits	969,128	930,688
Investment Income	629,712	673,012	Administration	229,097	186,944
	6,295,789	4,252,296	Communications	213,029	172,833
			Amortization	5,599	11,725
				1,862,116	1,707,925
			Excess of Revenue over Expenditures <i>(Before undernoted item)</i>	4,433,673	2,544,371
			Grants to NL Health Services	3,833,394	2,950,589
			Revenue after Grants and Expenditures	600,279	(406,218)



09. Looking Ahead



Looking Ahead

The year ahead represents an opportunity to build on a period of remarkable growth, momentum, and generosity. Guided by the priorities of Newfoundland and Labrador Health Services, the Health Care Foundation will continue advancing initiatives that strengthen care delivery, elevate the patient and family experience, and respond to emerging healthcare needs with clarity and purpose.

Investments in health innovation will remain central to this work. The Foundation will help support the new Unity Health Centre, including the addition of a new MRI machine that will improve access to diagnostic imaging and reduce wait times for patients across the region. Donor support will also fund the acquisition of a new PET-CT scanner, an essential advancement that will strengthen diagnostic imaging and advance medical research in Newfoundland and Labrador. This technology will play a vital role in helping clinicians solve complex medical challenges, improve diagnostic accuracy, and enhance patient care across multiple disciplines.

These innovations reflect a commitment to ensuring that patients receive the highest quality care close to home. As the province continues to evolve its clinical capabilities, philanthropic partnerships will play an essential role in accelerating progress and supporting the teams who deliver care every day.

With each initiative, the Foundation's focus remains clear: to ensure that every donor dollar translates into meaningful, measurable impact for patients, residents, families, and healthcare professionals. The continued partnership of donors, sponsors, and community supporters will be essential to sustaining this progress and expanding what is possible in healthcare across our province.

Together, we move forward with confidence, united by a shared commitment to ensuring exceptional care for the people of Newfoundland and Labrador today and for the generations to come.

Our Board

Ken Bennett
Chair

David Jones
Vice-Chair

Jeannie French
Treasurer

Craig Tucker
Director

John Allan
Director

Robin Quinlan
Director

Collette Smith
Director

Ron Johnson
Director

Colleen Hanrahan
Director

Dr. Angela Bussey
Director

Our Staff

Paul Snow
President and
Chief Executive Officer

Allison Noseworthy
Chief Financial Officer

Samantha Harding
Director, Marketing
and Communications

Darlene Goodyear
Major Gifts Officer, Capital
Campaign and Grants

Tammy Thompson
Administrative Coordinator

Derrick Moore
Development Officer,
Planned Giving

Gennette Martin
Senior Development Officer

Christina Morgan
Senior Development Officer


Catherine McCarthy
Executive Assistant

Katrina Taliana
General Manager – The Shop
(Health Sciences Centre
Gift Shop)

Melanie O'Brien
Marketing and Communications
Coordinator

We are Your **Health
Care Foundation**





71 Goldstone St, Suite 103,
St. John's, N.L.
A1B 5C3

(709) 777-5901
healthcarefoundation.ca
hcf@healthcarefoundation.ca