



Supporting:

Health Sciences Centre

St. Clare's Mercy
Hospital

Waterford Hospital

Dr. Leonard A. Miller
Centre

Dr. Walter Templeman
Health Centre

Health Care Foundation

71 Goldstone Street

Suite 103

St. John's, NL

A1B 5C3

709. 777.5901


www.healthcarefoundation.ca

ANNUAL REPORT 2014-15

Charitable Registration No.
85699 2334 RR0001

HEALTH CARE
FOUNDATION

Strengthening Care Together



LETTER FROM the PRESIDENT & CEO & the BOARD CHAIR

Dear friends and donors,

The Health Care Foundation is very pleased to share with you its 2014/15 Annual Report.

This year, the Health Care Foundation continued its tradition of success thanks to the unwavering support and generosity of our donors. We are delighted to share that a total of \$3,732,924 was transferred to Eastern Health in 2014/15 in aid of the five adult hospitals in the St. John's area and the services they provide to patients and families province-wide.

We are proud to report that thanks to the extraordinary support from the Building Trades Workers of the Resource Development Trades Council (RDTC), two Integrated Operating Suites are now fully operational. We continue to move forward on the completion of the remaining 15 suites, which will improve quality and safety, as well as facilitate better outcomes for our patients.


Thanks to supporters of our special events, we were able to make significant investments into equipment for Cardiac Care, Women's Health and Hematology. Our Annual, Planned and Major Giving programs continued to recruit donors who share our passion for better health care. Through these programs, we were able to support a variety of services, initiatives and equipment that will touch the lives of thousands, including our Comfort in Care™ Program, Provincial Air Ambulance Program, Diagnostic Imaging, Mental Health and Addictions, research and education.

Thanks to the ongoing support of people like you, we have been able to have an impact on the provision of health care like never before and will continue to do so into the future.

We invite you to review this annual report and share our success stories for the 2014/15 year, as they are also yours. We look forward to building on our successes and working with our donors, partners, committees, friends, volunteers, health care professionals and the community to further strengthen the care of patients and their families, together.

From the bottom of our hearts, thank you.

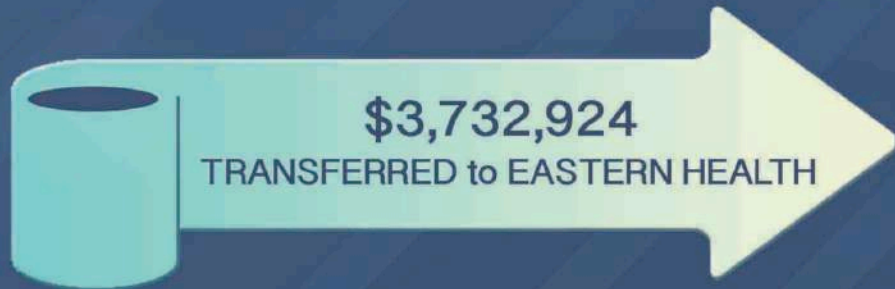
Sincerely,



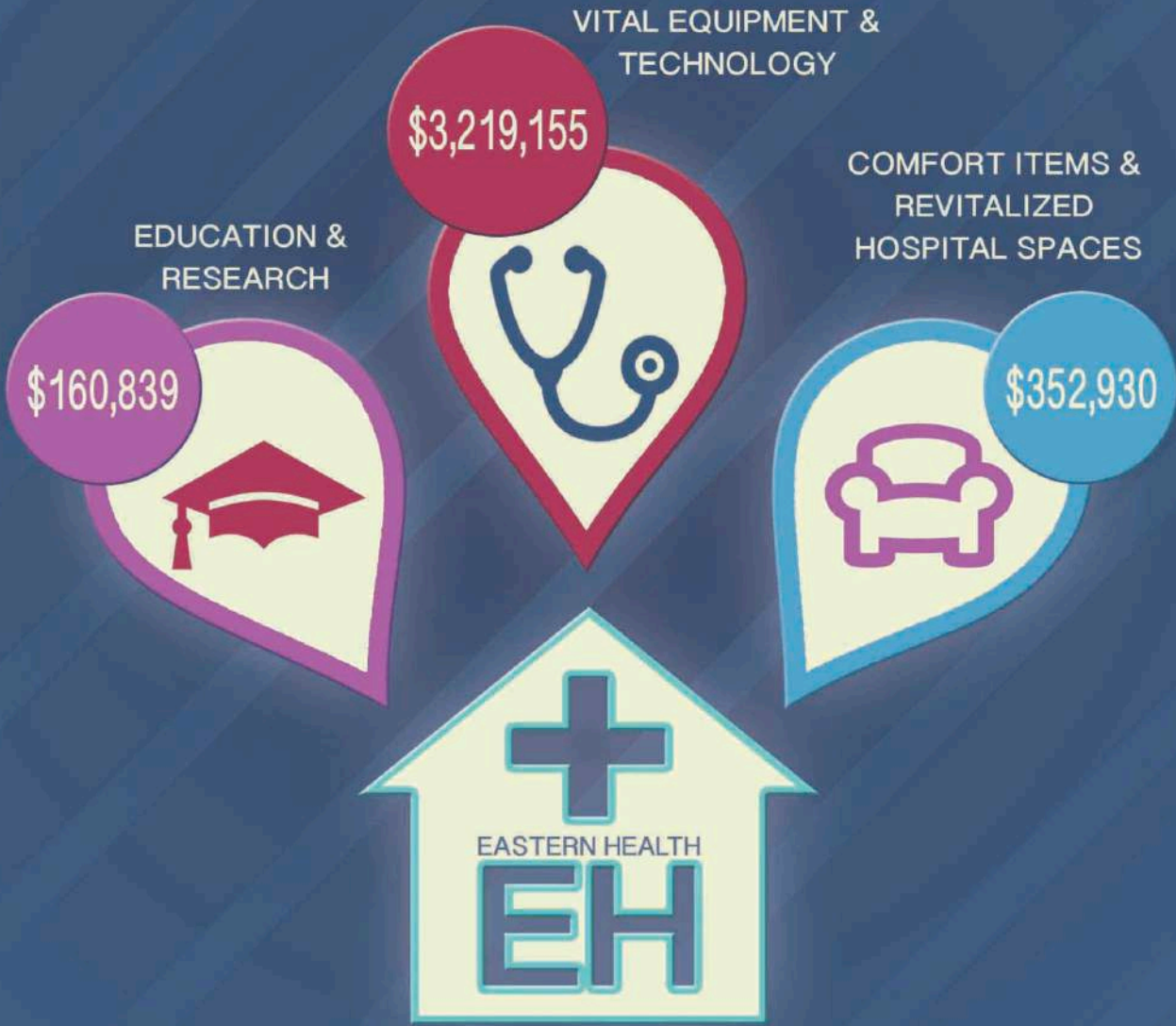
Debbie Patten
Board Chair



Paul Snow
President and CEO



HEALTH CARE FOUNDATION



OUR MISSION

The Health Care Foundation raises funds and develops strong and sustaining philanthropic relationships to support the highest level of adult health care through the funding of vital medical equipment, research, education and the provision of items that impact patient comfort and care.

OUR VISION

The goal of the Health Care Foundation is to continue to be the leading charitable organization which supports Eastern Health in providing the highest level of care to adults from across Newfoundland and Labrador.



Bob Downden, Vice-President with Johnson
and cardiac patient

DRIVING the CAUSE HOME: FROM DONOR to PATIENT

Johnson has supported the Health Care Foundation's Annual Charity Golf Tournament and Johnson Hearty Lunch for over 10 years. The support of donors and participants has helped the Health Care Foundation make significant advancements in equipment and technology for the Provincial Cardiac Care Program over the years. Recently, Johnson got to see firsthand the impact of its investments when long time employee and Vice-President Bob Downden suffered a heart attack.

"I was busy changing the faucet in one of our bathrooms when I felt excruciating pain and pressure in the centre of my chest," explained Bob. "I was diagnosed with a 90 per cent blockage in my left artery. I've been a healthy, active guy my entire life so you can imagine my surprise to have had a heart attack. There is a history of heart issues in my family which is why I've been so health conscious, but it still happened to me."

Once diagnosed, specialists inserted three stints to keep Bob's arteries open. The procedure was completed in one of the cardiac catheterization laboratories that was revitalized thanks to the donors of the Give from the Heart Campaign.

"Johnson has been proud to support the Health Care Foundation for many years," added Bob. "For me to know we directly contributed to equipment that helped save my life is incredible. It's also helped further emphasize the importance of fundraising and awareness initiatives undertaken by the Health Care Foundation."

The need for quality health care will truly touch us all at some point in our lives – whether it's ourselves or a loved one. By working together with our corporate donors, community, volunteers and health care providers to support events like the Annual Charity Golf Tournament we can continue to strengthen Cardiac Care in our province.

Over \$93,000 raised at 2014 Annual Charity Golf Tournament and Johnson Hearty Lunch

Thanks to your support, residents in our province will now have access to a state-of-the-art Transesophageal Echocardiogram machine, used to provide a close look at the heart's valves and chambers.

BUYING TIME: MAKING EVERY SECOND COUNT in OUR AIR AMBULANCES

Medical Flight Specialist John MacDonald demonstrates the new X-Series Zoll Monitors

Each year approximately 1,700 patients are transported to a health care facility by air ambulance in Newfoundland and Labrador – all of which will need to be hooked up to a cardiac monitor. At the Health Care Foundation, we understand the difference next-generation, quality equipment can make to patients and the staff treating them – especially in emergency situations! That's why in 2014/15, we were pleased to support the purchase of two new cardiac monitors for the Provincial Air Ambulance Program.

To raise the funds needed, the Health Care Foundation reached out to the community through a direct mail appeal and was overwhelmed by the reaction we received from both new and long-time donors.

Together, with the support of the community, we were able to purchase two new X-series Zoll monitors, which would replace outdated monitors for the aircraft located in Happy Valley Goose Bay, NL.

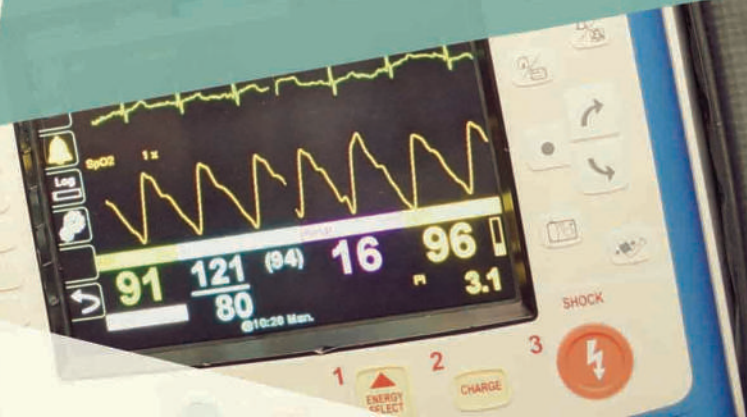
These new monitors serve as defibrillators, cardiac pacers and automatic blood pressure cuffs. They can monitor oxygen and respiration rates, a patient's temperature and even detect carbon monoxide poisoning. Additionally, they have an extended battery life which is important for transport medicine. The varied functionalities allow medical flight specialists to complete a number of tasks with one small piece of equipment while displaying all necessary vital information on a screen.

"The new X-series Zoll monitors provided by the Health Care Foundation are light, rugged and user friendly," said Robert Humphries, Medical Flight Specialist with the Air Ambulance Program. "These qualities, mixed with their reliability, are an asset in the unpredictable environment of medical transport"

We thank our donors for helping us strengthen the care of all patients who may require transport on an air ambulance for years to come.

Meet the Donor

After receiving our direct mail piece for the Air Ambulance, the owner of DGM Software Development Inc. signed his company up to our monthly donor club. Why? Because his recent experience with a close friend reminded him that the need for quality health care does touch us all. Thanks DGM Software Development Inc. for contributing to better health care for us all!



TEN YEARS of COMFORT in CARE™

The 2014/15 fiscal year marked the 10th year anniversary for the Comfort in Care™ Program. This program funds a number of items that aim to increase the comfort, care and well-being of patients and families, such as sleeper chairs, rocking chairs, fans, blanket warmers, wheel chairs and much more. To celebrate, we provided over \$150,000 in funding to enhance patient comfort, care and well-being. Of the funding, \$100,000 was provided for the purchase of comfortable chairs to be placed at the bedside of 175 patients and \$50,000 was awarded as grants to 45 frontline employees for the purchase of patient comfort items.

The Origins

Comfort in Care™ is the brain child of a passionate retired nurse, Kathy Corbett.

“As a nurse, I was involved in the direct care of patients for many years,” said Kathy. “During that time, I became increasingly aware of how basic items, conditions or actions can help reduce stress, build strength and promote healing for patients, while also improving efficiency in the workplace.”

Kathy's idea was brought to fruition with the collaboration of staff at the Health Care Foundation, the current chair of the Comfort in Care Committee Paul Byrne and Eastern Health representatives.

“What is really powerful about the program is that people's ideas and donations come together to help ease suffering and to make positive contributions to the hospital environment,” said Kathy.

From creation to experience

Kathy got to see the importance of the Comfort in Care™ program first hand after she was diagnosed with cancer in 2011.

“A particular poignant experience came my way when I was given a blanket which had been heated in a blanket warmer while receiving treatments in the Ambulatory Treatment Unit at the Health Sciences Centre,” explained Kathy. “The blanket helped me feel relaxed, warm and allowed me to rest more easily through the treatment. This blanket warmer was funded through the Comfort in Care™ Program.”

Comfort in Care™ truly exemplifies how we can work together - patients, health care professionals, donors, volunteers and the community - to strengthen care in our hospitals.

Kathy Corbett, founder of the Comfort in Care™ Program



Planning a Gift of Comfort

Thanks to the late Mr. Gary Rowe's legacy gift, we've created the Gary Rowe Memorial Comfort in Care Fund which will help fund grants that will provide comfort items to thousands of patients for years to come. The Estate of the late Mr. Gary Rowe has also provided funding for capital equipment, research and education!

MAJOR STRIDES from MAJOR GIFTS

Integrated Operating Suites Named

In March 2015, we announced that 17 Integrated Operating Suites would be named in recognition of the extraordinary support from the Building Trades Workers of the RDTC. Through a fund created within the Hebron Project, the Building Trades Workers of the RDTC have made a multimillion dollar commitment towards surgical care at the Health Sciences Centre and St. Clare's Mercy Hospital.

During the 2014-15 year, the Health Care Foundation invested \$3,219,155 into equipment and technology for the five adult hospitals in the St. John's region.

This funding will provide patients and health care professionals with access to equipment like a MRI compatible breast biopsy device and telemental health video monitors. Funding will also help evolve technology within our hospitals, by investing in items like the Interface Management Software System for Hematology and McKesson Cardiology Software.

A significant portion of the investment into new state-of-the-art equipment has been made by Vale and the Resource Development Trades Council to further evolve diagnostic imaging at Eastern Health. These organizations have jointly given \$1.4 million over the last two years for the replacement of two SPECT CT Scanners, one of which is now operational at St. Clare's Mercy Hospital. The remaining SPECT CT will be installed at the new Molecular Imaging Facility at the Health Sciences Complex once completed.

A SPECT CT is a diagnostic tool that combines the capability of nuclear medicine and radiology to create fused images that help diagnose and monitor cardiac and cancer patients' treatment.

"The new SPECT CT will have a number of updates that will increase patient comfort, improve ergonomics for staff, and improve clinical efficiency by reducing the time it takes to complete the exam," said Dr. Rick Bhatia, Clinical Chief, Diagnostic Imaging at Eastern Health. "Having next-generation equipment is crucial to not only the integrity of testing for our patients, but also for the recruitment and retention of physicians and medical professionals in our province."

Thanks to the support of our major donors and the vision of our medical professionals, our patients continue to have access to superior equipment and technology that will strengthen health care in Newfoundland and Labrador. As we look forward, we reaffirm our commitment to work with our partners to support innovation in our health care system for years to come.

HOSPITAL HOME LOTTERY SHOOTS and SCORES

The Health Care Foundation's Hospital Home Lottery continued to generate excitement and raise vitally needed funds in the 2014/15 fiscal year. In May 2014, we concluded our sixth annual lottery and netted \$934,814 for various adult health care programs.

After the success of the 2014 lottery, we knew it was imperative to work with our partners to make the 2015 Hospital Home Lottery the best yet – and we did not disappoint! In March 2015, we launched our seventh annual Hospital Home Lottery, which featured more than 1,681 prizes, including a grand prize showhome valued at \$1 million!

Rockwood Homes have custom built our grand prize homes since the inception of the lottery and we were pleased to work with them again this year. The showhome, nestled in Virginia Waters Village, is filled with standout features inside and out, including an indoor synthetic skating rink complete with a custom sports bar!

I wanted to put an emphasis on colour and texture for the exterior design. By using a variety of materials such as natural stone, cedar shakes and wood trims, combined with a rich coloured siding, I was able to give the house a warm and inviting presence from the street," said Dave Dobbin, Project Management and Design, Rockwood Homes.

"The interior of the home is defined by large windows and an abundance of natural light," added Dave. "Cathedral ceilings in the great room, family room and master bedroom help heighten the sense of openness and allow the rooms to be filled with natural light."

In addition to the luxurious showhome, we also had some other big ticket prizes that attracted the masses, including the Early Bird Prize, a 2015 Four Winds Motorhome or \$70,000 cash!

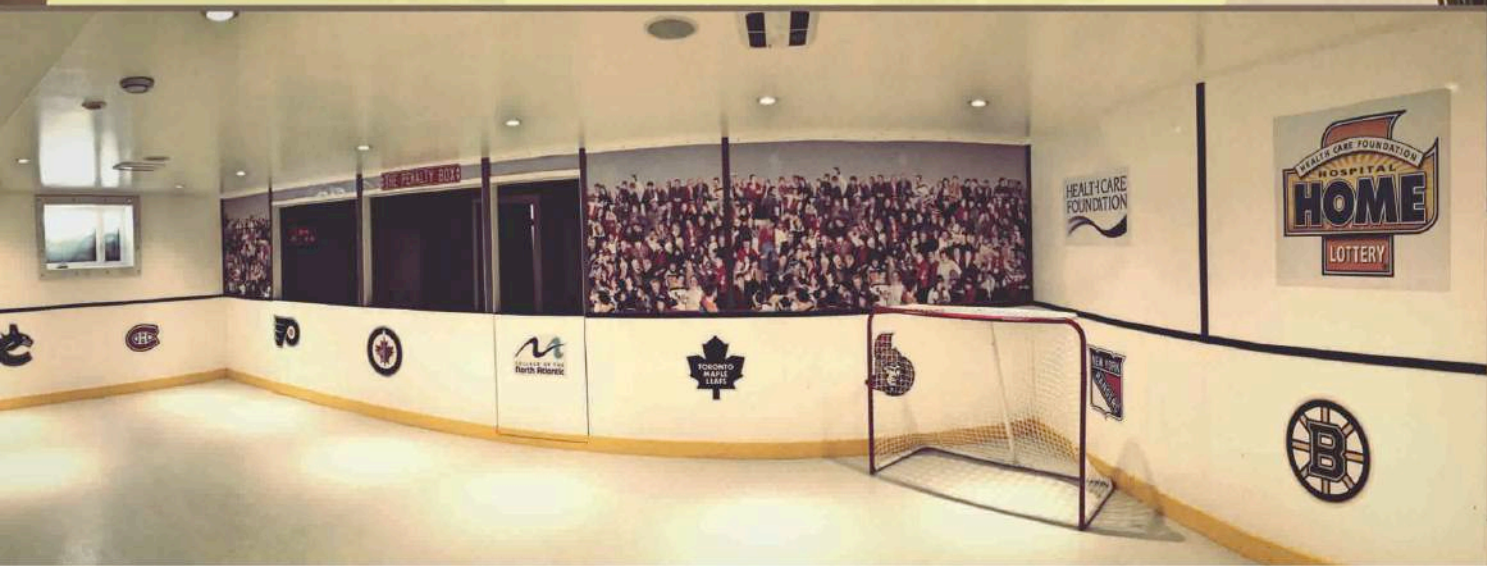
Another big "draw" for lottery supporters was the 50/50 add-on and the new Cash Calendar.

It will be tough to top the 2015 Hospital Home Lottery, but as always, we are up for the challenge – just wait for our 2016 lottery!

Proceeds in action

Thanks to the generous and enthusiastic support from our community, the Hospital Home Lottery has raised millions for...

- Vital equipment
- Research
- Mental Health and Addictions
- Cardiac Care
- Surgical Care
- Comfort in Care™ Program



Our events and programs would not be possible without the support of our sponsors, donors, friends and volunteers!

The 2014/15 YEAR IN REVIEW

2014 Brunch with the Bags

The eighth annual Brunch with the Bags™ continued its tradition of success in 2014, raising \$117,000 for women's health programs in St. John's. Funds raised at the event supported the purchase of four pieces of equipment including an access high-low exam table, an ultrasound probe, a bladder scanner and a colposcope.

2014 Eleganza – Pirates and Pearls

The Health Care Foundation's largest fundraising event, Eleganza was another huge success in 2014, raising \$490,520. The extravagant pirate décor, delicious meal, delightful entertainment and variety of games and auction items made the evening unforgettable. But the greatest accomplishment of the event was raising the necessary funds to purchase an interface management software system for eleven hematology laboratories and support special projects within the Comfort in Care™ Program.

2014 Canadian Nursing Association and Research Grants

The Health Care Foundation is proud to support research and education initiatives that promote excellence in health care. That's why we provide funding for research, nursing skills and education! In 2014/15, TD Bank Group donated \$25,000 as part of a multi-year commitment to the foundation to help nurses complete a certification or recertification from the Canadian Nurses Association (CNA). Additionally, the Health Care Foundation awarded \$43,174 in research grants to five recipients for projects that will benefit care practices in our hospitals.

HEALTH CARE FOUNDATION BOARD of DIRECTORS

Chair	Debbie Patten
Vice-Chair & Treasurer	Jocelyn Perry
Secretary	David Jones
Directors	Donna Stone Ed Drover Leslie O'Reilly Nora Duke Margaret Butt Ken Bennett Dr. Oscar Howell Arlene Dunn

*Strengthening
Care
Together*

President & CEO Paul Snow

HEALTH CARE FOUNDATION STAFF

Allison Noseworthy	Anne Downton
Jackie O'Brien	Stephen White
Julie Macdonald	Gennette Martin
Lesley Smith	Carmella Butland
Kim Marnell	Dana Norman

Health Care Foundation of St. John's Inc. Statement of Operations Year ended March 31, 2015

	Total 2015	Total 2014
Revenue		
Annual Giving	553,327	712,549
Major Giving	3,184,324	2,885,892
Planned Giving	138,606	80,109
Special Events	756,709	693,747
Hospital Home Lottery	3,154,500	3,112,840
Investment Income	91,717	65,122
	<u>7,879,183</u>	<u>7,550,259</u>
Expenditures		
Salaries and Benefits	656,382	732,886
Annual Giving	124,965	187,189
Major Giving	22,091	6,382
Planned Giving	2,557	376
Special Events	216,235	168,472
Hospital Home Lottery	2,351,354	2,209,041
Administration	205,939	184,038
Communications	83,719	60,996
Amortization	11,008	10,188
	<u>3,674,250</u>	<u>3,559,568</u>
Excess of revenue over expenditures before undernoted item	4,204,933	3,990,691
Grants to Eastern Health	3,732,924	3,196,174
Excess of revenue over expenditures	<u>472,009</u>	<u>794,517</u>
Net Assets, beginning of year	3,700,680	2,906,163
Excess of revenue over expenditures	472,009	794,517
Fund Transfers	-	-
Net assets, end of year	<u>4,172,689</u>	<u>3,700,680</u>